

Phase 10
Formatted Existence Phenomenon

10.7

Panini Ashtadhyayi - Cyclic Values Flow :
(Beginning and End reach at the same ment)

I

अष्टाध्यायी

Ashtadhyayi

1. Ashtadhyayi is composed as eight (अष्ट) chapters (अध्याय).
2. TCV (अष्ट) = 11, TCV (अध्याय) = 13;
3. TCV (अष्ट अध्याय) = 11 + 13 = 24.
4. TCV (पुरुष / Purush) = 24

II

ब्रह्मा

Brahma

5. Braham Puran preserves enlightenment, as that, for to be parallel with 'Existence Phenomenon', understand (ब्रह्मा BRAHMA) as (पुरुष PURSHA).
6. TCV (ब्रह्मा) = 29.
7. Yoga Darshan enlightens, as that for अपौरुषीय विद्या Aporshia Vidya, सोपक्रम soapkaram format is to be followed
8. TCV (सोप) = 16, TCV (क्रम) = 13;
9. 16 + 13 = 29, 16 - 13 = 3.
10. (29 + 3) = 32

III

Cyclic format flow :

Beginning and End reach at the same ment

11. Sutra 'आद्यन्तवदेकस्मिन्' 1.1.21, आद्यन्तवत् अ० ॥ एकस्मिन् ।
An operation should be performed on a single letter, as upon an intital or upon a final.

12. Cyclic formatted, Value wise, 'Starting point will be the end point', however otherwise, starting point and end reach point, will be distinct points.
13. This feature is parallel with a range of n points is of (n-1) gaps.
14. The set up of n points range together with (its n-1) gaps, makes a set up of $\{n + (n-1)\} = 2n - 1$.
15. N = 32 makes a set up of '63', parallel with transcendental code value of transcendental mantra 'ॐ नमः शिवाय Om Namoh Shivay' : (i) TCV (ॐ Om) = 16 (ii) TCV (नमः Namoh) = 32, (iii) TCV (शिवाय Shivay) = 15.

IV

Transition and Transformation Of manifested creation as of transcendental features

16. The cyclic format features of Ashtadyayi are parallel with 'Transition and Transformation of manifested creation as of transcendental features'.
17. Basis base of this 14 Maheshwara Sutras reached at by तपः / Tapa / Penace, a phenomenon of values features of attainment reach from पौरुषीय Purshia state to अपौरुषीय Apurshia state.
18. तपः / Tapa / Penace, formulation, on its chase is of chase reach from creative (4-space order) to transcendental within 5-space order :
 - (i) TCV (त् varga letter 4.1) = 4 of Sathapatya format 4-space as dimensional order
 - (ii) TCV (प् varga letter 5.1) = 5 of Sathapatya format 5-space as dimensional order
 - (iii) TCV (तप) = 4 + 1 + 5 + 1 = 11, as dimension fold is of reach at 14 as origin fold.
 - (iv) Value 14 is parallel with TCV (शरीर Shareer / Body) = 14.
 - (v) Value 14 is of Sathapatya (hyper cube 4)
 - (vi) Value 14 is of Sathapatya features of Hyper Cube 14 of Sathapatya 29 parallel with TCV (ब्रह्मा).

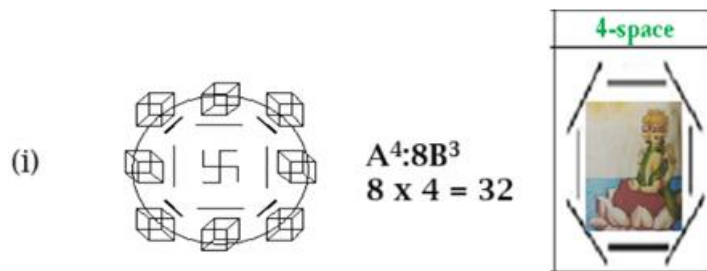
V

Invisible feature of existence values

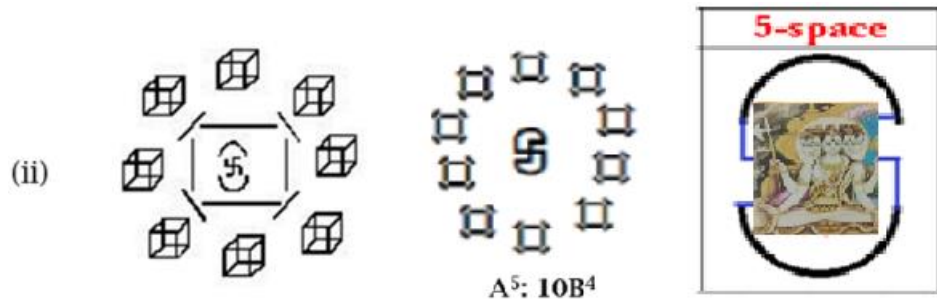
19. Sutra ‘अदर्शनं लोपः’ 1.1.60, अदर्शनम् लोपः,
The substitution of a blank (lopa) signifies disappearance.
20. Transcendental features of creations in manifested state are in invisible state.
21. Sutra ‘प्रत्ययस्य लुक्श्लुलुपः’ 1.1.61, प्रत्ययस्य लुक् श्लु लुपः’
The disappearance of an affix when it is caused by the works luk slu or lup are designated by those terms respectively.
22. Sutra ‘प्रत्ययलोपो प्रत्ययलक्षणम्’ 1.1.62, प्रत्यय लोपे प्रत्यय लक्षणम्’
When elision of an affix has taken place (lopa) the affix still exerts its influence, and the operations dependant upon it, take place as if it were present.
23. TCV (लक्षण) = 22, parallel with summation value of four folds (4, 5, 6, 7) of hyper cube 6 of 6-space body in 4-space.
24. It is the Sathapatya measuring rod of 6-space, which is become a basis base of Existence Phenomenon availed by Sutras of Ashtadhayayi, as Vyakaran Vedanga to reach at Vedic domain (Veda), Samhita, Sakala Rigved Samhita.

VI

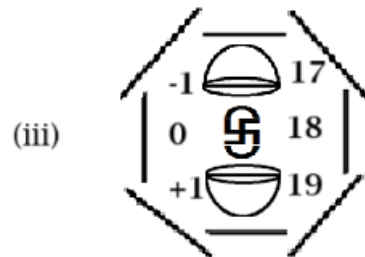
Sequential unfolding within Creator’s space



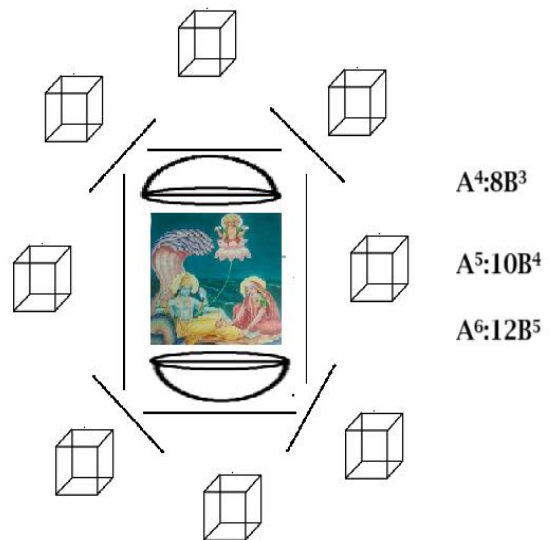
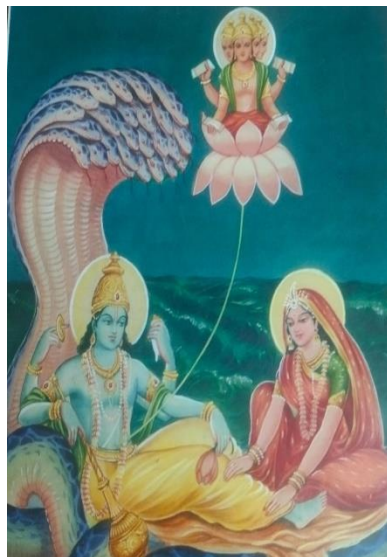
(Four space) content manifests as of four folds of summation value 14.



5-space content manifests within 4-space as Hyper cube 5 of four folds (3, 4, 5, 6) of summation value 18.



The spatial order of 4-space, splits Hyper Cube 5, into a pair of domains of Sathapatya values 17 and 19. Triple values (17, 18, 19) is of manifestation format (-1, 0, +1) as manifested value 18 is parallel with TCV (शून्य Sunya / Zero) = 0



Origin fold of Hyper Cube 5 is 6-space of creative (4-space) order and of spatial (2-space) dimension of dimension order.

(iv) 5-space content manifestation as four folds (3, 4, 5, 6) of summation value 18 is parallel with TCV (प्रकृति / Prakrati / Nature) = 18. The number values range 1 to 18 is of 33 factors. $33 = 18 + 15$, 15 is parallel with TCV (प्रत्यय / Pratataya). Ashtadhayayi avails this Sathapatya features of Prakrati Pratataya for chase of transcendental transition for manifested creations.

VII
Ashtadhayai Sutras
(प्रकृति) Prakrati (प्रत्यय) Pratataya

Table of (प्रकृति) Prakrati (प्रत्यय) Pratataya with basis base Sathapatya values and features will follow in PDF document 10.8 onwards.

Dr. S. K. Kapoor
12-04-2025